

Candy Corn Dark Side

Graph Crochet Pattern

by

Psychedelic Doilies

Below you will find the graph in full. For your convenience I have also broken it down into nine parts. You may choose to print these out and tape them together so that you have a larger graph to work with.



Red



Orange



yellow



white

I have provided a black background graph as a color suggestion but have also included a graph with a lighter background to save printer ink and so the graph is easier to mark off for those who prefer a physical graph to work with.

I would love to see your finished blanket!

Please join my private Facebook Group and share your Psychedelic Doilies completed projects. With your permission I may use your photos on my social media or in a blog post!

[Join the group now.](#) (Make sure to answer the two entry questions!)

If you're unfamiliar with crocheting graphs check out this helpful article I've put together: [How to Crochet a Graph](#)



Jessica Bowman (Psychedelic Doilies) Copyright 2018 [Facebook](#) - [Pinterest](#) - [Instagram](#) - [Website](#) - [Etsy](#)

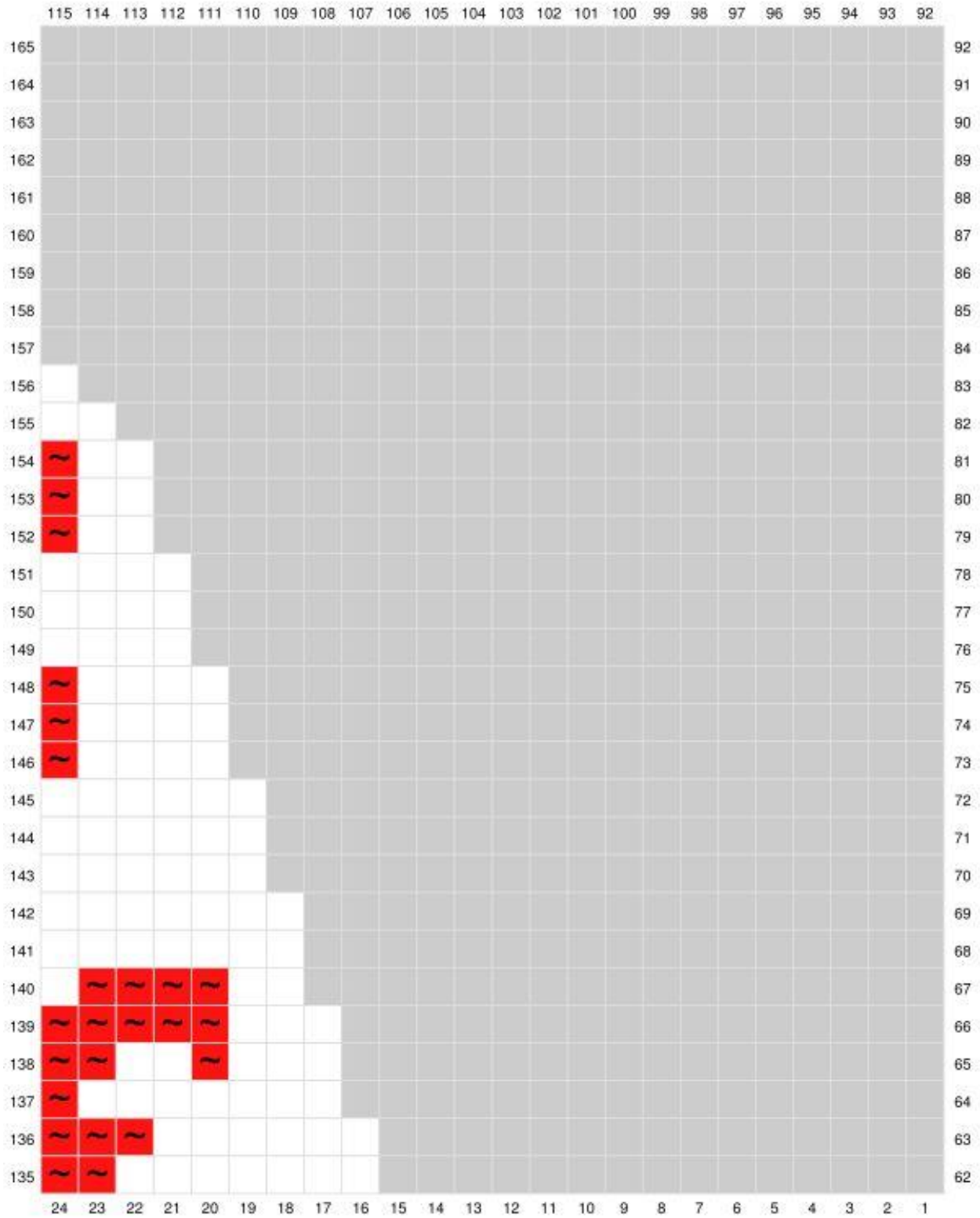


Jessica Bowman (Psychedelic Doilies) Copyright 2018 [Facebook](#) - [Pinterest](#) - [Instagram](#) - [Website](#) - [Etsy](#)

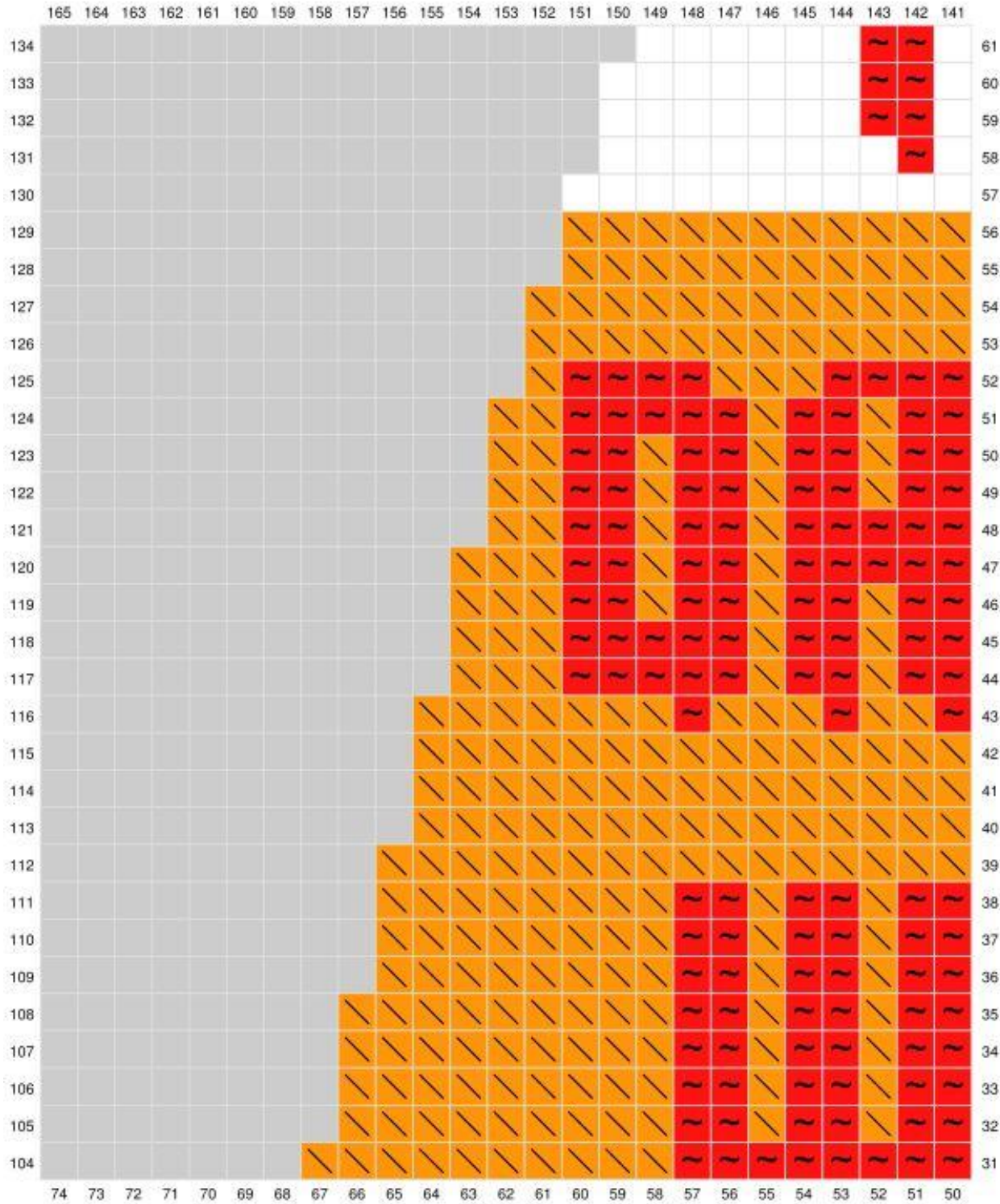
Top Center



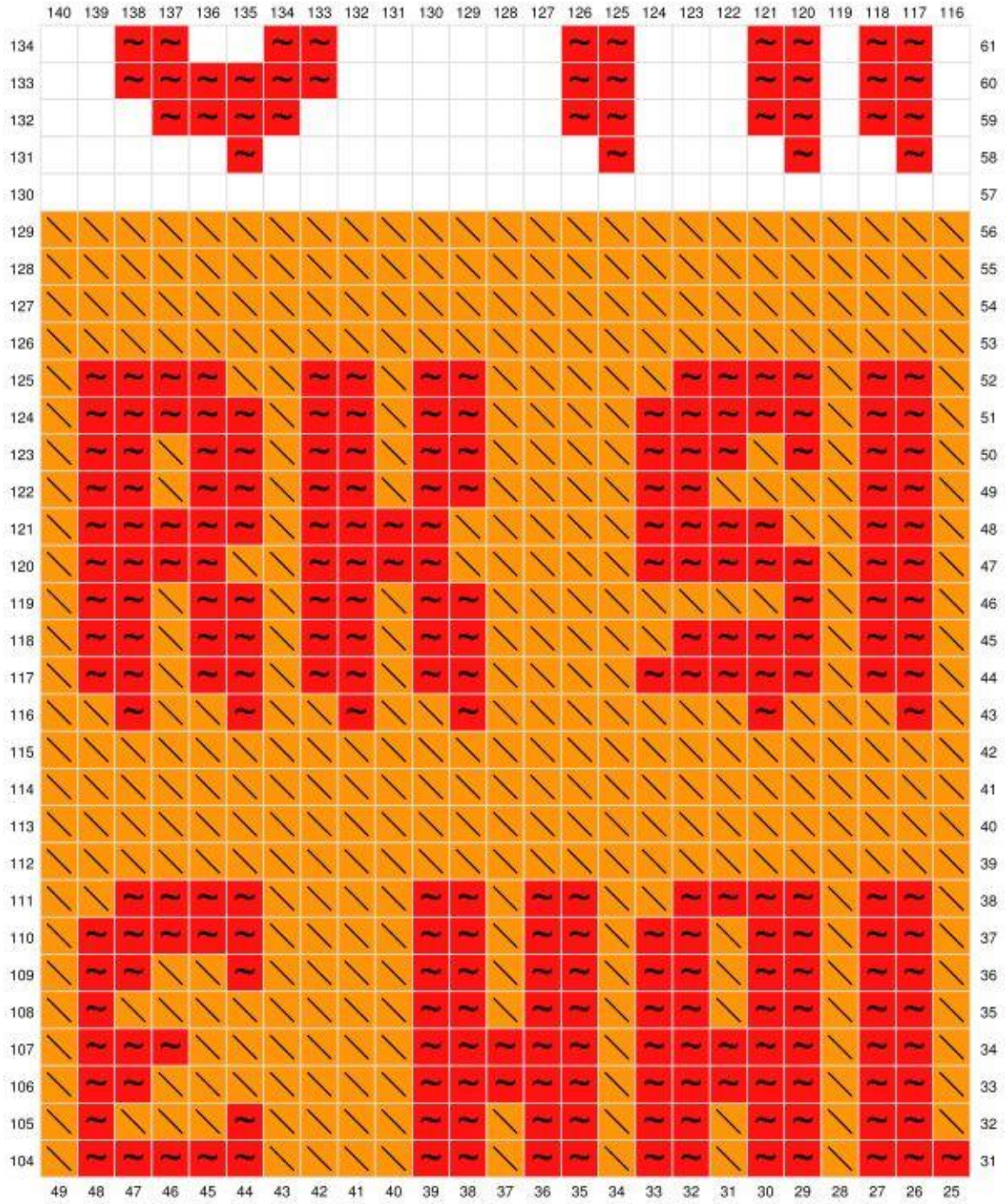
Top Right



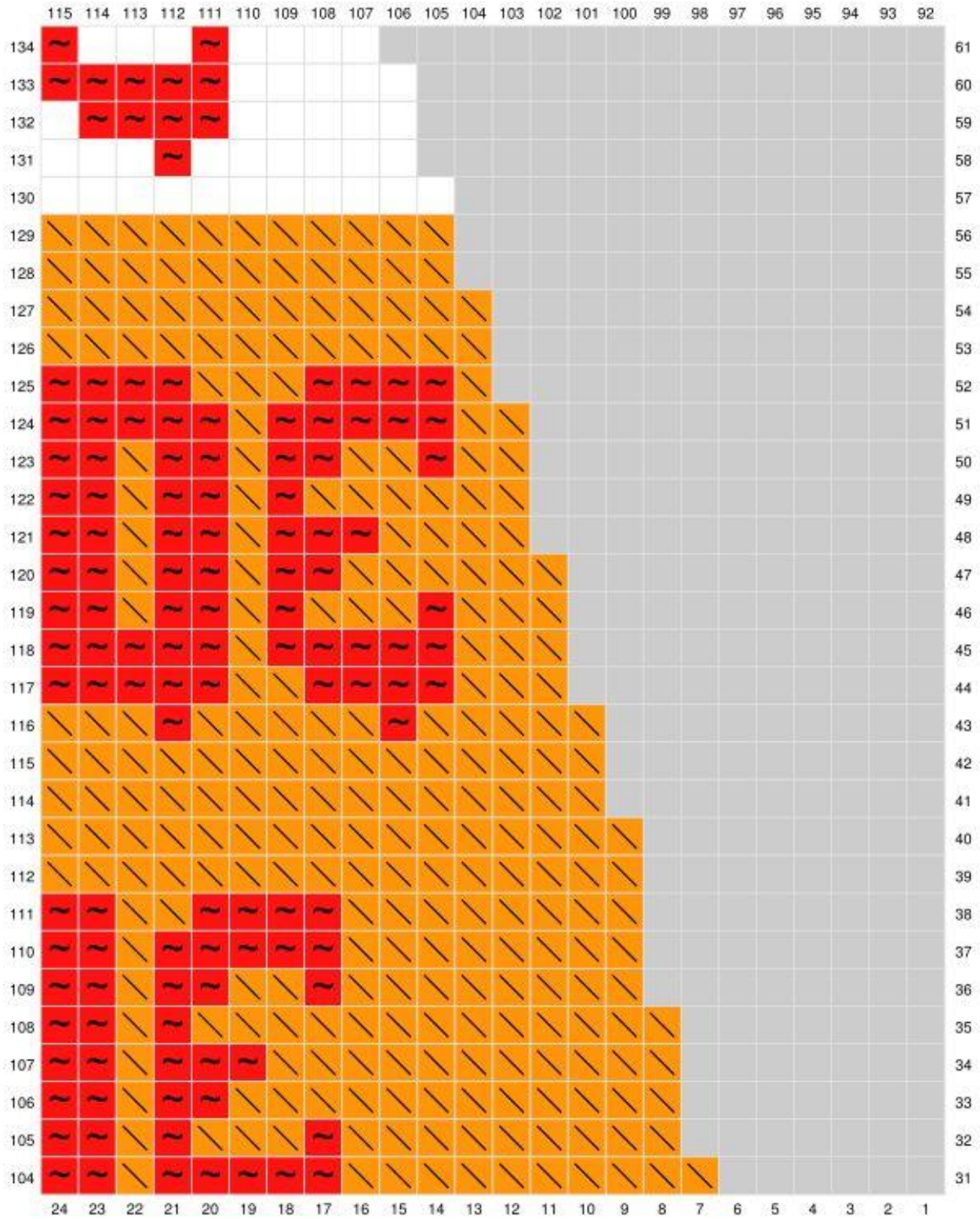
Middle Left



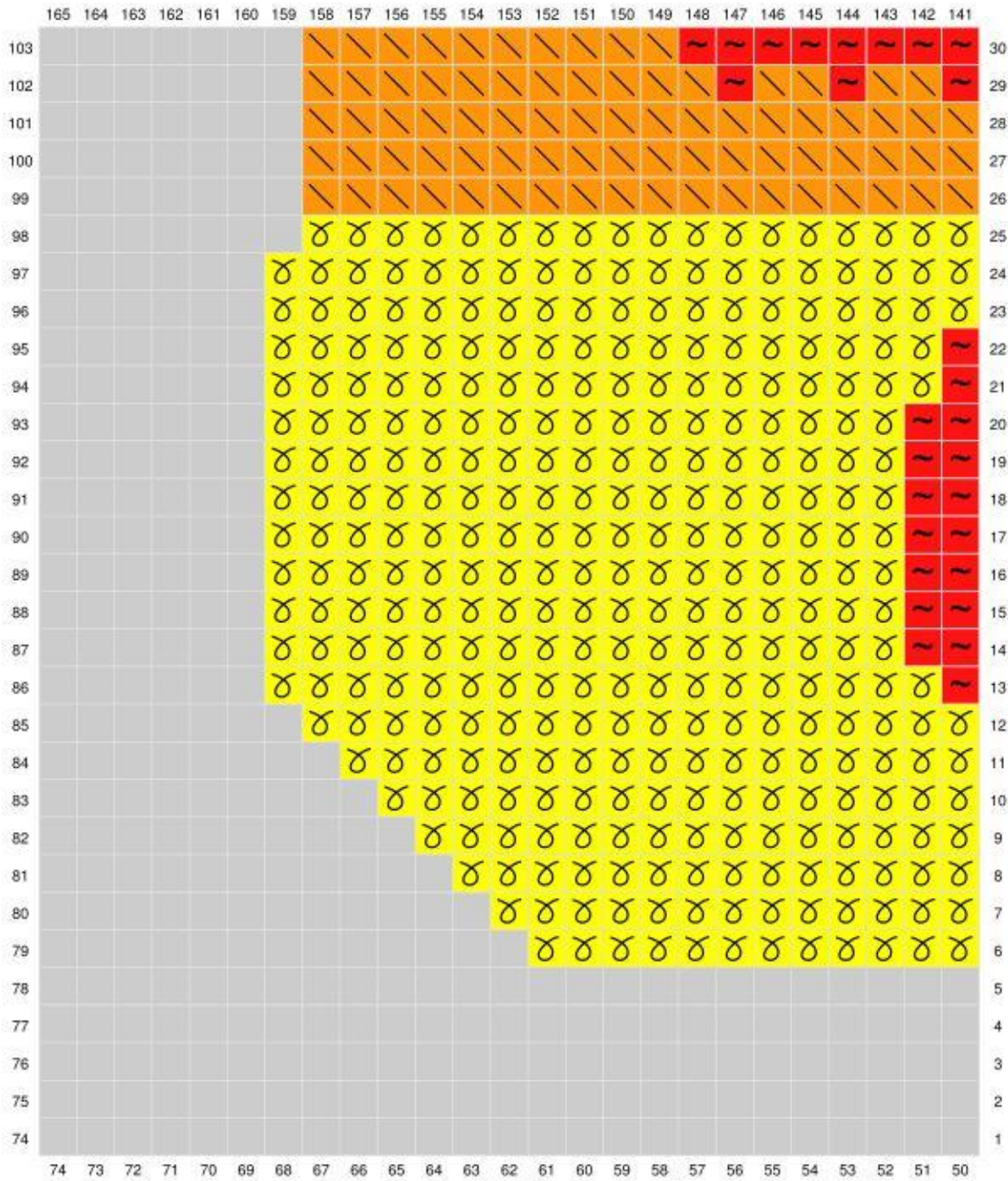
Middle Center



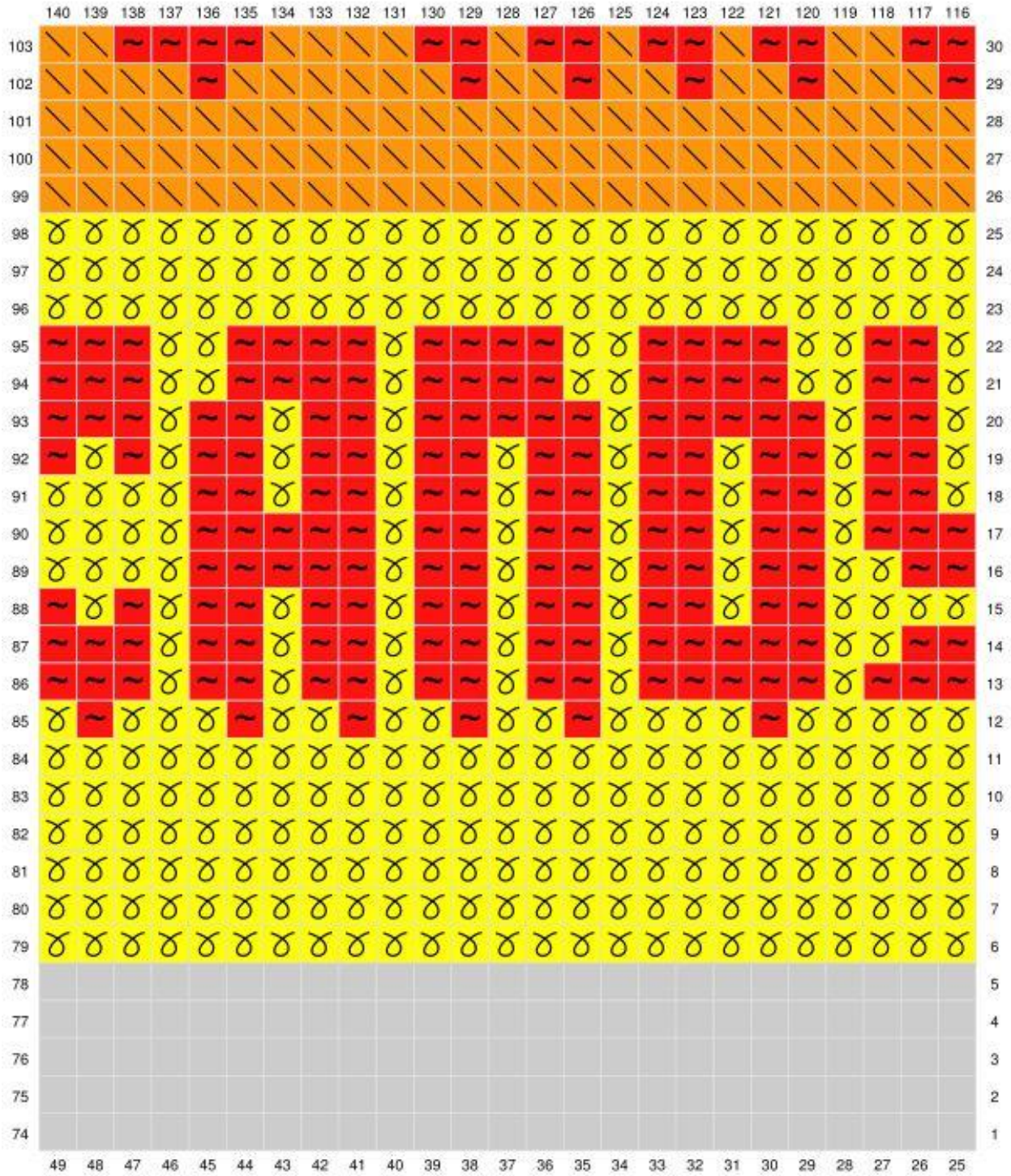
Middle Right



Bottom Left



Bottom Center



Bottom Right

