

# Winter Table Runner

## Graph Crochet Pattern

by

## Psychedelic Doilies



Below you will find the graph in full. For your convenience I have also broken it down into three parts. You may choose to print these out and tape them together so that you have a larger graph to work with.

If you're unfamiliar with crocheting graphs check out this helpful article I've put together: [How to Crochet a Graph](#)

### **Additional Details**

I used the mini c2c (corner to corner) method to make my table runner and the finished piece, including sc border, measures approximately 10 x 42 inches. If you'd like your table runner shorter or longer you can easily add or take away a repeat of the poinsettia pattern by sketching it out on graph paper.

The Pipsqueak yarn is a bit bulkier so I modified my HDC stitch to use only 2 stitches per square on tiles using this fun fluffy yarn. The rest of my squares use the traditional 3 HDC stitches per tile.

The graph is two-tone (blue and white) but I chose to do the accents in gray instead of white.

### **Border**

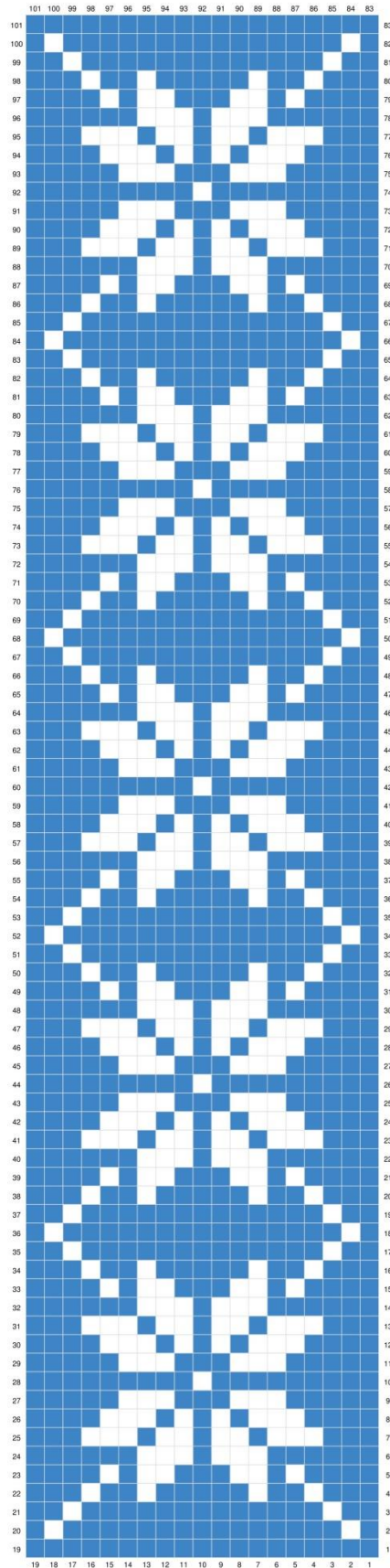
I added a simple sc border working 2 sc on the side of each square with a sc, ch 2, sc in each corner. For more border ideas check out my Crochet Edges and Borders Pinterest Board. [Follow Now](#).

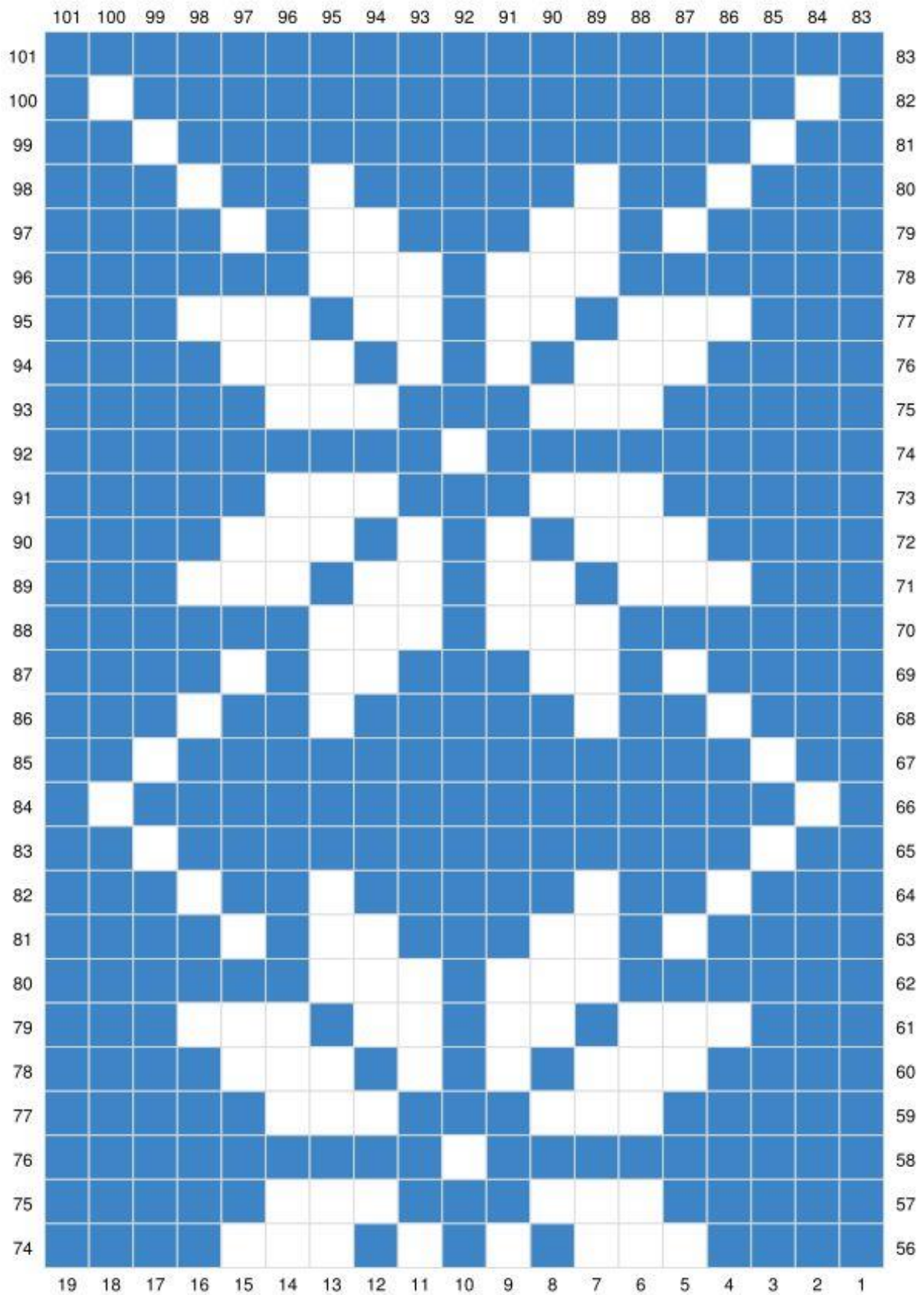
### **Facebook Group**

I would love to see your finished project!

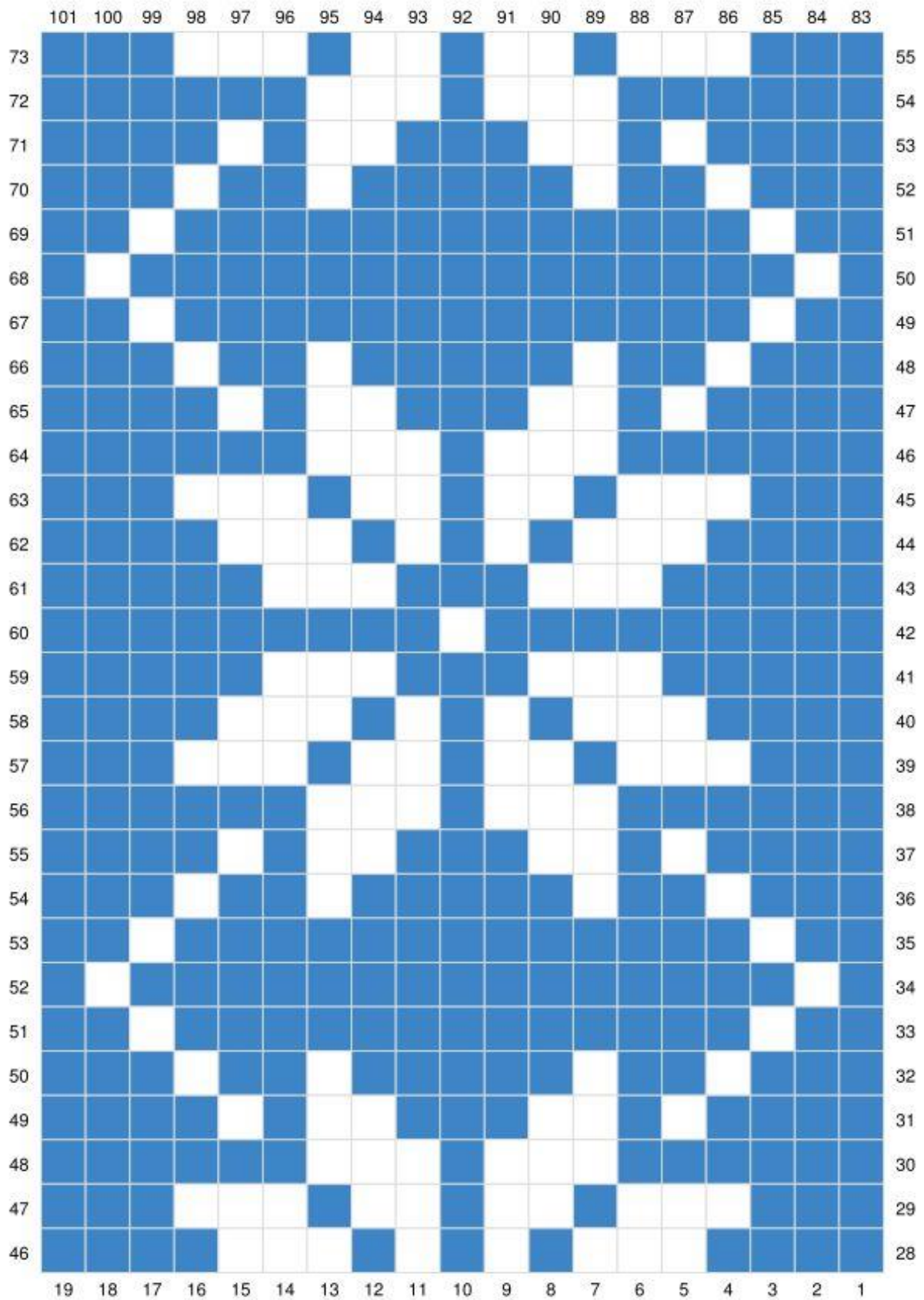
Please join my private Facebook Group and share your Psychedelic Doilies completed projects. With your permission I may use your photos on my social media or in a blog post!

[Join the group now](#). (Make sure to answer the two entry questions!)









Jessica Bowman (Psychedelic Doilies) Copyright 2019 [Facebook](#) - [Pinterest](#) - [Instagram](#) - [Website](#) - [Etsy](#)

